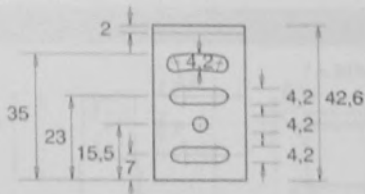
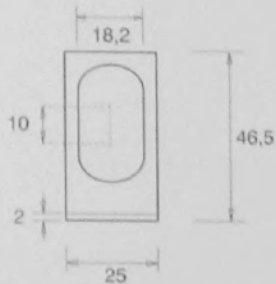




## ● A retroreflessione in corrente alternata

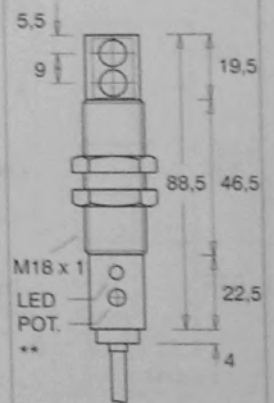
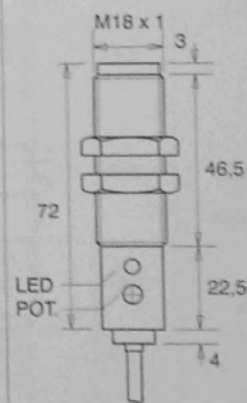
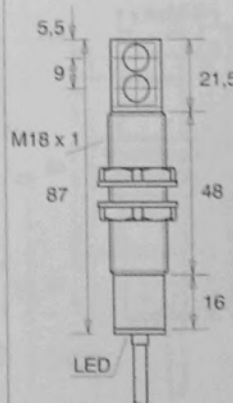
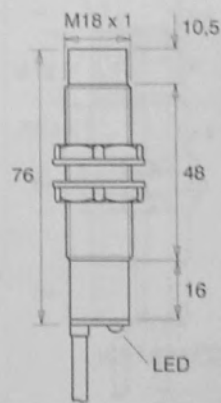
**SAIET**  
ELETTRONICA



Staffa di fissaggio  
Bracket



### A RETTORIFLESSIONE IN CORRENTE ALTERNATA / AC RETROREFLECTIVE



MODELLO / MODEL	D-A2KL/RA/D2 D-A2KL/RC/D2	D-A2KL/RA/D2/V D-A2KL/RC/D2/V	D-A2ML/RA/D2 D-A2ML/RC/D2	D-A2ML/RA/D2/V D-A2ML/RC/D2/V
Distanza di scatto / Operating distance	0,1 ÷ 2,0 m con catarifrangente CT-5 / using reflector CT-5			
Direzione di lavoro / Operating direction	Orizzontale Horizontal	Verticale Vertical	Orizzontale Horizontal	Verticale Vertical
Funzione d'uscita / Output function	SCR; NA - NC / SCR; NO - NC			
Alimentazione / Power supply	90 ÷ 250V <sub>ca</sub> / V <sub>ac</sub>			
Assorbimento / Power drain	0,5 VA <sub>max</sub>			
Corrente di commutazione Switching current	150 mA <sub>max</sub>			
Tempo di risposta / Response time	10 ms <sub>max</sub>			
Sorgente di luce / Light source	LED all'infrarosso / Infrared LED			
Immunità alla luce ambiente Illumination immunity	< 10000 Lux.			
Contenitore / Case	Poliammide / Polyamide		Ottone nichelato / Nickel plated brass	
Grado di protezione / Protection degree	IP 66			
Temperatura di funzionamento Operating temperature	-20 ÷ +60 °C			
Collegamento d'uscita Output connection	Cavo / Cable (PVC, AWG 26, L=2 m)			

\*\* Led e potenziometro si trovano a 180° rispetto alla posizione indicata in figura

Led and potentiometer are located 180° referring to the drawing position.